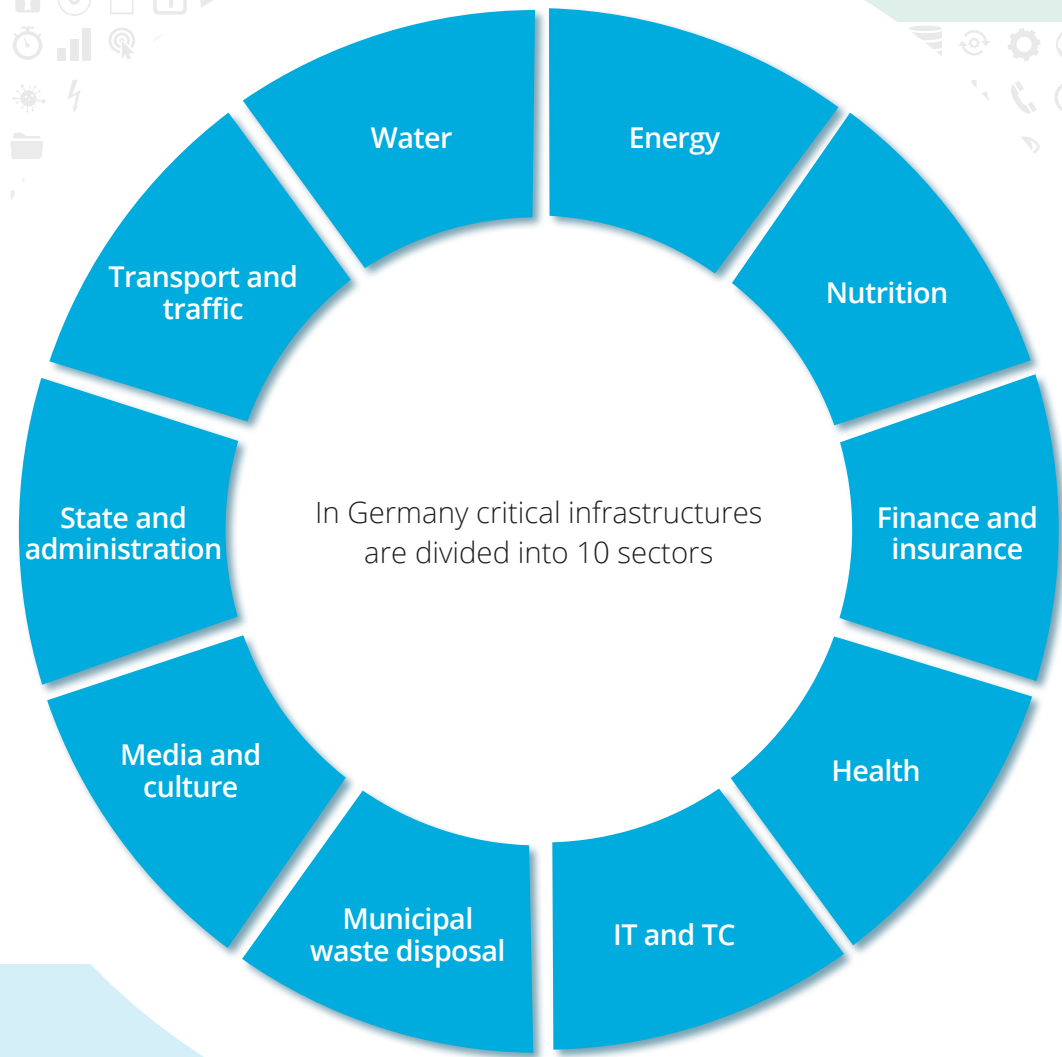


## KRITIS

The German government defines critical infrastructures as follows: 'Critical infrastructures (KRITIS) are organisations or facilities with important significance for the state community, the failure or impairment of which would result in sustained supply bottlenecks, significant disruptions to public safety or other dramatic consequences.'

(Source: [https://www.kritis.bund.de/SubSites/Kritis/DE/Einfuehrung/einfuehrung\\_node.html](https://www.kritis.bund.de/SubSites/Kritis/DE/Einfuehrung/einfuehrung_node.html))

PDV KRITIS Services have been specially developed for companies and organisations that operate critical infrastructures (KRITIS) and therefore have to fulfil special regulatory requirements in terms of IT security.



## IT Security Act

Operators of critical infrastructures are obliged to adequately secure the IT systems required for the provision of their important services in accordance with the state of the art. The basis for this is formed by German federal laws, ordinances and EU directives.

These regulations aim to guarantee the security and reliability of IT infrastructures and thus ensure the continuity of important services.



**PDV-Systeme GmbH**  
**Office Goslar**  
Dörntener Straße 2 A  
38644 Goslar

+49 (0) 5321 3703-0  
goslar@pdv-systeme.de

**Office München**  
Felix-Wankel-Straße 10  
85221 Dachau

+49 (0) 8131 6161-0  
muenchen@pdv-systeme.de

[www.pdv-systeme.de](http://www.pdv-systeme.de)

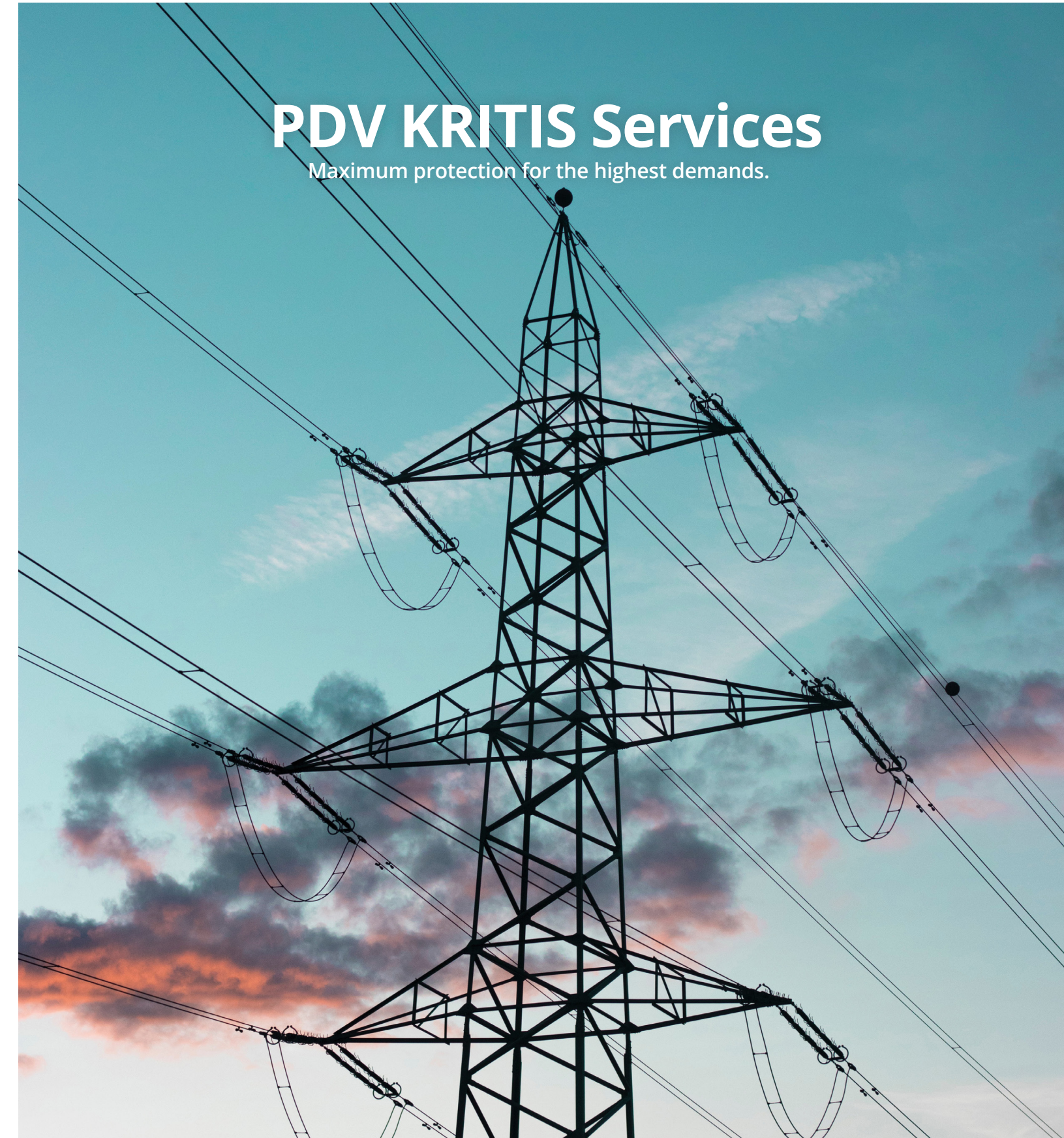
**Office Flensburg**  
Lise-Meitner-Straße 2  
24941 Flensburg

© Copyright PDV-Systeme GmbH | Rev-040 | 13.08.2024



# PDV KRITIS Services

Maximum protection for the highest demands.





The all-round worry-free packages for critical infrastructures.

Our PDV KRITIS services are specially developed for companies that operate infrastructures (KRITIS) and therefore have to fulfil special regulatory IT security requirements.

The aim of these criticality-compliant services is to rapid troubleshooting or elimination of a fault by replacing defective parts of an IT environment as well as preventive measures to avoid future faults.

Our KRITIS services are characterised by the fact that they are provided by us within the framework of an ISO27001 certified ISMS - from call handling to the successful handling through the fault.

All KRITIS packages are customised to the specific requirements that apply to your company.

Detailed information on the services included are available on request.

All services. All the details.

More information and details on all PDV services, included in the packages can be found on our website: [www.pdv-systeme.de](http://www.pdv-systeme.de)



# 4 PACKAGES FOR YOUR SAFETY.

## PDV Hardening Service

- Regular comparison of the system configuration with the system configuration based on updated hardening PDV Hardening Service templates and recommendation and implementation of configuration adjustments

## PDV Vulnerability Service

- Checking the IT infrastructure for newly discovered vulnerabilities and assessing their security relevance for the IT infrastructure environment
- Elimination of security vulnerabilities after approval of the proposed measures

## PDV Release Service

- Regular checking of installed software, patch and firmware versions for compliance with support matrices and manufacturer recommendations and the provision of recommendations for the implementation of updates
- Implementation of updates after approval by the customer

## PDV Hardware Service

- Repair of defective hardware at the customer's site

## PDV KRITIS BASIS Service

- Service provision within the framework of an ISO27001-certified ISMS
- Service provision by security-cleared employees in accordance with the German Security Clearance Act (SÜG)
- Utilisation of a service desk based in Germany with security-cleared personnel (at least VS - NfD)
- Checking spare parts for possible manipulation and ensuring their integrity before use in the customer environment

**BASIC** package

**STANDARD** package

**ADVANCED** package

**PREMIUM** package

